

SNOWFLOWERS CARDIGAN

available in 2 lengths, plus Hat!

PATTERN NO. 1456 • Intermediate

CARDIGAN: FINISHED SIZE:

37 41 45 49 in.

FINISHED LENGTH:

Cropped Length Version:

17.5 18.25 19 19.75 in.

Regular Length Version:

21 21.75 22.5 23.25 in.

HAT: Finished Circumference: 19.25 in.

MATERIALS

Knit One, Crochet Too® Yarn

Camelino (50-gr/109-yd) (90% merino wool/
10% camel)

Note: Hat takes one ball A and 1/4 ball B.

Cropped Length Version, including Hat:

9 10 11 12 balls Pewter #933 (A)

2 3 3 4 balls Fawn #810 (B)

Regular Length Version, including Hat:

10 11 12 13 balls Ice #620 (A)

3 3 4 4 balls Steel #629 (B)

Stitch holders

Five 5/8-in. buttons for Cropped Length Version

Six 5/8-in. buttons for Regular Length Version

Needles: One pair and one 24-in. circular US
size 8 (5 mm) knitting needles,
or size to obtain gauge

GAUGE

In St st and color pat,

20 sts and 25 rows = 4 in./10 cm

To save time, take time to check gauge.

3-Needle Bind Off: Place sts from each shoulder holder onto separate needles, points parallel and facing the same direction. Holding these with RS tog, and with a 3rd same size needle, (insert needle in first st from front needle and first st from back needle, and k2 tog) twice, * pass first st from RH needle over 2nd to BO, knit next 2 sts from LH needle tog as before; rep from * until 1 st rem. Fasten off.

NOTE

Cardigan is shown in 2 different lengths.

Body is worked back and forth on circular needles without side seams, up to underarm. Fronts and Back are worked separately to shoulders.

BODY

Using A and circular needle, CO

182 206 230 254 sts.

Row 1 (RS): K2, * p2, k2; rep from * across.

Row 2: P2, * k2, p2; rep from * across.

Rep Rows 1 and 2 for 1 in. for Regular Length, and 3 in. for Cropped Length, dec 1 st in last WS row—

181 205 229 253 sts rem.



From the
**KNIT ONE
CROCHET TOO**
Design Studio

Beg St st, and work even for 2 rows.

Beg Chart 1, work RS rows from right to left, rep from C to I across, ending last rep at J. Work WS rows, from left to right, from J to C once, then rep from I to C to end of row.

Cont as est through Row 19 of Chart 1.

Beg Chart 2 and work across as for Chart 1, rep Rows 1–14 for rest of piece.

Work even until Body measures 10.5 in. for Cropped Version, and 14 in. for Regular Version, ending with a WS row.

Dividing Row (RS): Cont in est color pat, work across

40 45 50 55 sts for Right Front and place on holder,
BO next

10 12 14 16 sts for underarm, work across

81 91 101 111 sts for Back and place on holder,

BO next

10 12 14 16 sts for underarm, work across last

40 45 50 55 sts for Left Front.

LEFT FRONT

WS facing, cont in est color pat across next row.

Armhole Shaping: Dec 1 st at armhole edge eor

6 7 9 10 times—

34 38 41 45 sts rem.

Work even until armhole measures

4 4.75 5.5 6.25 in. from beg, ending with a WS row.

Neck Shaping (RS): Work across

27 29 29 31 sts, turn placing rem

7 9 12 14 sts on holder for front of neck.

Dec 1 st at neck edge eor 5 times—

22 24 24 26 sts rem.

Work even until armhole measures

7 7.75 8.5 9.25, ending with a WS row.

Place rem sts on holder.

BACK

WS facing, work across Back sts on holder, cont in est color pat.

Armhole Shaping (RS): Dec 1 st at armhole edge eor

6 7 9 10 times—

69 77 83 91 sts rem.

Work even until armhole measures

7 7.75 8.5 9.25, ending with a WS row.

Place first and last

22 24 24 26 sts on holder for shoulders, place center

25 29 35 39 sts on holder for back of neck.

RIGHT FRONT

WS facing, work across Right Front sts on holder, cont in est color pat.

Complete to match Left Front, reversing shapings.

SLEEVES

Using A, CO

46 50 50 54 sts.

Work in k2, p2 rib as for Body for 1 in. for Regular Length, and 3 in. for Cropped Length, inc

3 3 5 5 sts in last WS row—

49 53 55 59 sts on needle.

Beg St st (see WHILE AT THE SAME TIME below), and work even for 2 rows.

Beg Chart 1 with a RS row, as follows: Beg at

C H G D, work to I, rep from C to I, end at

J E F I.

Cont as est through Row 19 of Chart 1.

Beg Chart 2, centering in row, and rep Rows 1–14 for rest of Sleeve,

WHILE AT THE SAME TIME, shape Sleeve as follows:

Inc 1 st each side every

10 8 8 6 rows

8 2 6 11 times, then every

-- 10 10 -- rows

-- 7 4 -- times, working color pat on new sts—

65 71 75 81 sts on needle.

Work even until Sleeve measures

17.5 18 18 18.5 in. from beg,

or desired length to underarm, ending with a WS row.

Armhole and Cap Shaping: BO

5 6 7 8 sts at beg of next 2 rows,

dec 1 st each side eor

13 15 17 19 times—

29 29 27 27 sts rem.

BO 3 sts at beg of next 6 rows—

11 11 9 9 sts rem.

BO rem sts.

FINISHING

Join shoulder seams using 3-Needle Bind Off method.

Neckband: RS facing, using A, knit across

7 9 12 14 sts from Right Front neck holder, pick up and knit 20 sts on side of neck to shoulder seam, knit across

25 29 35 39 from Back neck holder dec 1 st at center of sts, pick up and knit 20 sts on left side of Front neck, knit across

7 9 12 14 sts from Left Front neck holder—

78 86 98 106 sts on needle.

Beg with Row 2, work in k2, p2 rib as for Body for 5 rows.

BO all sts in ribs.

CROPPED LENGTH VERSION:

Buttonband: RS facing, using A, evenly pick up and knit

82 86 90 94 sts on Left Front edge.

WS facing, knit 1 row.

Beg ribbing as for Body and work for 5 rows. BO all sts in ribs.

Buttonhole Band: Work as for Buttonband for 3 rows.

Next Row (RS): Work on 6 sts, [yo, k2 tog, work 16 (17, 18, 19) sts] 4 times, yo, k2 tog, work on last 2 sts.

Complete band to match Buttonband.

REGULAR LENGTH VERSION:

Buttonband: RS facing, using A, evenly pick up and knit

98 102 106 110 sts on Left Front edge.

WS facing, knit 1 row.

Beg ribbing as for Body and work for 5 rows. BO all sts in ribs.

Buttonhole Band: Work as for Buttonband for 3 rows.

Next Row (RS): Work on 4 (3, 2, 4) sts,

[yo, k2 tog, work 16 (17, 18, 18) sts] 5 times,

yo, k2 tog, work on last 2 (2, 2, 4) sts.

Complete band to match Buttonband.

Sew buttons opposite buttonholes.

Set in Sleeves at armhole edge. Sew Sleeve seams.

HAT

Using A, CO 94 sts.

Row 1 (RS): P2, * k2, p2; rep from * across.

Row 2: K2, * p2, k2; rep from * across.

Rep Rows 1 and 2 until band measures 1.25 in. from beg, inc 3 sts evenly in last WS row—97 sts on needle.

Beg St st and Chart 1, Rows 1 and 2, then work Chart 2, beg and ending as for Body, working Rows 1–14 once, then Rows 1–6 once.

Next Row (RS): Work Row 7 of Chart 2, dec 1 st bet each motif across row—82 sts rem.

Purl back. Work rest of Hat with A only.

Top Shaping: Dec Row 1 (RS): * K6, k2 tog; rep from * across, end k2—72 sts rem.

Row 2 and all WS rows: Purl.

Dec Row 3: * K5, k2 tog; rep from * across, end k2—62 sts rem.

Cont in same manner, dec 10 sts every RS row until 22 sts rem.

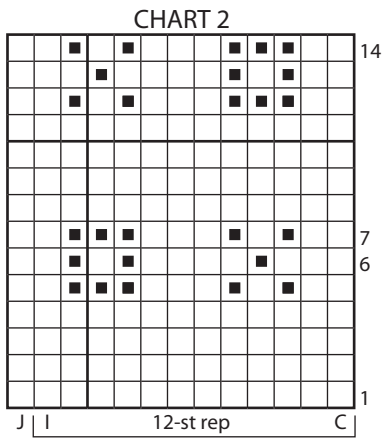
Next RS Row: (K2 tog) across—11 sts rem.

Purl back.

Next RS Row: (K2 tog) across, end k1—6 sts rem.

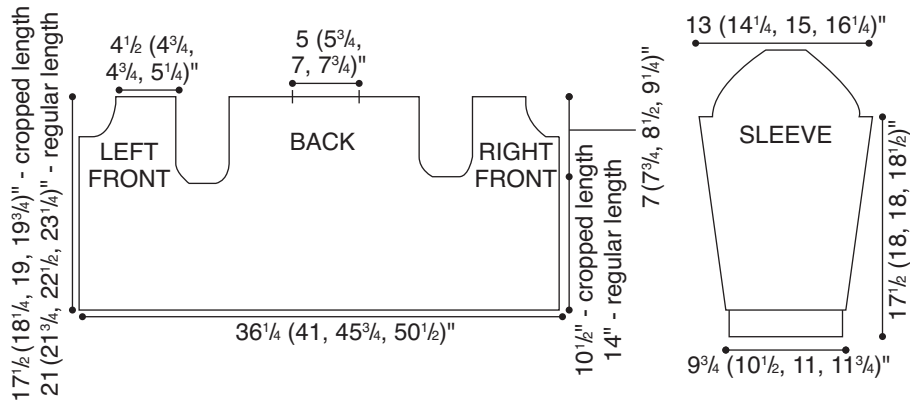
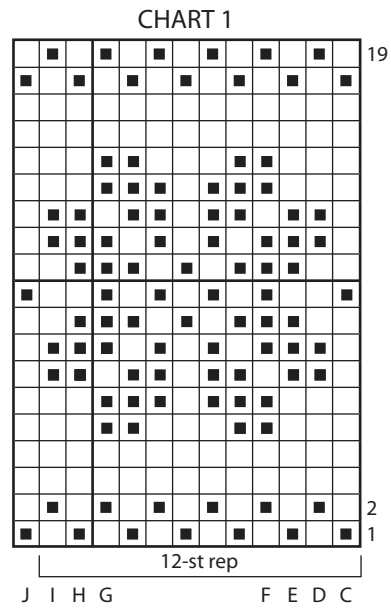
Cut yarn and weave rem sts through yarn. Pull tightly to close top.

Sew back seam.



COLOR KEY

- = A
- = B



Abbreviations

- | | |
|-----------------------|------------------------------|
| beg - begin(ning) | pm - place marker |
| bet - between | rem - remain(ing) |
| BO - bind off | rep - repeat |
| CO - cast on | RH - right-hand |
| cont- continue | RS - right side |
| dec - decrease | st(s) - stitch(es) |
| eor - every other row | St st - stockinette stitch |
| est - established | (knit RS rows, purl WS rows) |
| k - knit | tog - together |
| LH - left-hand | WS - wrong side |
| p - purl | yo - yarn over |
| pat - pattern | |

©2007, Knit One, Crochet Too, Inc., Windham, ME 04062
 Although every effort has been made to ensure the accuracy of these instructions, Knit One, Crochet Too, Inc., cannot be held responsible for human or typographical errors, variations in individual work or misinterpretation of instructions. All Knit One, Crochet Too, Inc. patterns are authorized for non-professional, individual home use only. Copying this pattern for distribution is strictly forbidden.
<http://www.knitonecrochettoo.com>